

X10 Mini & Hidden Curtain Motor User Manual

Please read this manual carefully before using the product!

Edition:1.0

Cautions



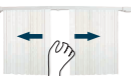
No entry into water



Do not disassemble



Do not plug in before completing installation



After installation, do not forcefully pull the curtain



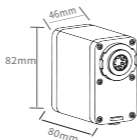
Do not strike, collide and fall



Use after firmly installing

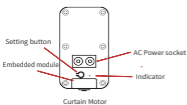
Functions

Soft start(Cancelable)+stop when blocking + electric stroke +slow start and stop + overtime protection+ remote control + reset + reverse setting +speed regulation + dry contact (optional)+Tuya/Smartlife control(optional)



Rated voltage: AC90-240V 50/60Hz
Working temp: -5°C~45°C
Rated Power: 18W
Rated torque: 1.5N·m
Noise: <35dB
Speed: 14cm/S
Overtime protection: 4min
Protection grade: IP41
Insulation class: E
Remote: 433.92Mhz
Zigbee: 2.4GHz
APP: Tuya smart/Smartlife

Power wiring



AC Power cable

Note:

- Make sure the connection between power cable and socket is tight;
- Select a plug style that is suitable to your local power socket.

Module plug-in design



Standard interface and specifications



Easy to switch to other modules



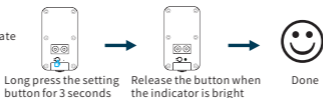
Hot-swap and Fast plug-in



Secondary development and customization

Settings

Enter the setting state

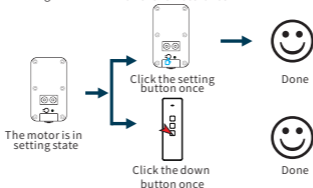


!
The setting state goes out within 10 seconds if there is no other operation !

Learn code



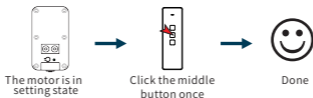
Reverse Settings



!
● It is effective only when the the remote in use has been learned!

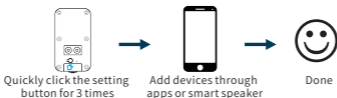
● The working direction of all the controls will be reversed after setting!

Soft start

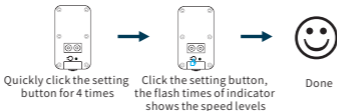


!
It is effective only when the the remote in use has been learned!

Motor networking



Speed setting



!
● The indicator goes out in 6 seconds automatically if there are no more operations.

● 3 levels are settable.

● Default speed level is 2.

Reset (Clear Code)



Smartlife (Wi-Fi)

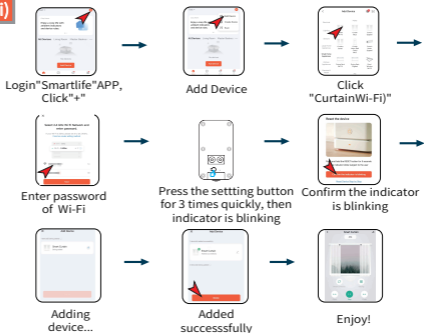


Optional function

Control by Google assistant or Amazon Alexa after bounding the ID with Google or Alexa.



Scan and get Smartlife



Smartlife (Zigbee)



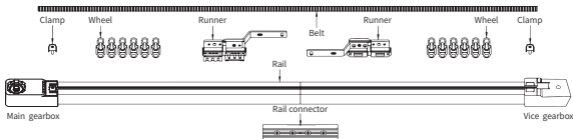
Optional function

● Make sure the Zigbee gateway has added in the APP.

● Control by Google assistant or Amazon Alexa after bounding the ID with google or Alexa.

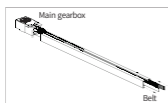


Rail exploded view

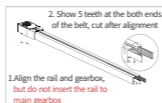


Rail assembling

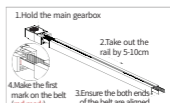
Cutting dimension of rail=Total length-Main gearbox 106mm-Vice gearbox 71mm



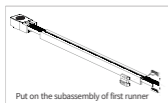
- 1, Pass the belt through main gearbox



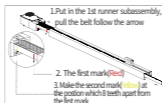
- 2, Cut the belt



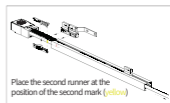
- 3, Make the 1st mark on the belt



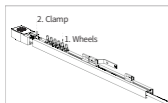
- 4, Place the first runner



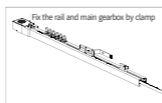
- 5, Make the second mark



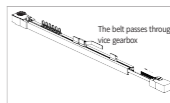
- 6, Place the second runner



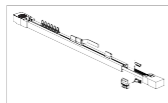
- 7, Place the wheels and clamp



- 8, Fix the main gearbox



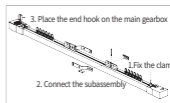
- 9, Place the vice gearbox



- 10, Put on the subassembly of the first runner



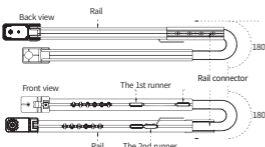
- 11, Place the wheels and clamp



- 12, Fix the first runner and complete the assembling

Guidance for pre-assembly rail

- 1, Open the box



- 2, Join the rails by connector



Align the rails and connect together



Fix the screws on the connector

- 3, Connect and fix the first runner on the rail



- 4, Put on the ceiling brackets and complete the assembling

